



MAINTENANCE RELATED PARTS

**FRONT FORK CAP
PUSH TOOL**

**STOPPER RING MOUNT
FRONT FORK
DISASSEMBLING TOOL!**



1. Turn **bolts on both sides** and press the top cap in.

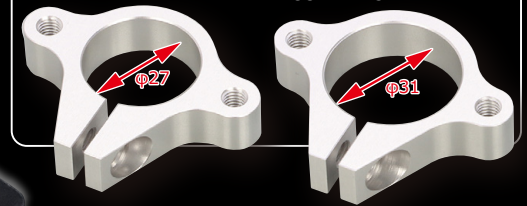
2. Secures the top cap in place while it is pressed down, assists the disassembling of stopper ring.

Front fork top cap disassembling tool newly released. top cap can be locked while pushed in, assists stopper ring disassembling. Recommended for disassembly work during front fork maintenance and setup.

CLAMP

CROSS CUB 50/110 etc.

PCX, PCX150
GSX-R125 etc.



KITACO INITIAL ADJUSTER
ATTACH / DETACH
(CROSS CUB110)

Recommend use of socket (8mm)

PHOTO : CROSS CUB 110 (JA60)

FRONT FORK CAP PUSH TOOL (FOR φ27 FORK)

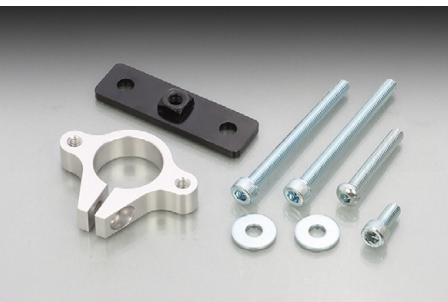


APPLICATION	●φ27 FRONT FORK OF FOLLOWING VEHICLE HONDA CROSS CUB 50 (AA06)、CROSS CUB 110 (JA45/JA60)、CROSS CUB 110 Lite (JA79)
--------------------	------------------------------------------------------------------------------------------------------------------------------

NOTE	●CLAMP : MACHINED ALUMINUM ●PLATE : STEEL WITH BLACK ●1 SET
-------------	-------------------------------------------------------------

CODE	PRICE
674-0501000	¥ 3,200

FRONT FORK CAP PUSH TOOL (FOR φ31 FORK)



APPLICATION	●φ31 FRONT FORK OF FOLLOWING VEHICLE HONDA PCX (JF28/JF56/JF81/JK05)、PCX150 (KF12/KF18/KF30/KF47) etc. SUZUKI GSX-R125 (DL32D/DL33B)、GSX-S125 (DL32D/DL32B) etc.
--------------------	--------------------------------------------------------------------------------------------------------------------------------------------------------------------------------------

NOTE	●CLAMP : MACHINED ALUMINUM ●PLATE : STEEL WITH BLACK ●1 SET
-------------	-------------------------------------------------------------

CODE	PRICE
674-0501010	¥ 3,200

